

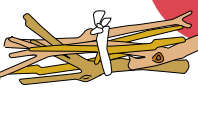
Garbage and Recyclables Collection Schedule and Disposal Procedures

Please sort and put out your garbage and recyclables at the designated collection station no later than 8:30 a.m. on the collection day (except for neighborhoods that collect household garbage and dry-cell batteries at night).

Write in the collection day of your neighborhood and follow this schedule. (Please see pages 14 to 15 for the collection schedule.)

Household Garbage

Twice a week



Dry-cell batteries:
Once a week; second of the collection days



Wed

Sat

Household garbage is also collected on **national holidays**, with the exception of the year-end holiday period from December 31 to January 3.

Days of the week

Recyclables

Bottles, cans, metal items, paper items, cloth items, fluorescent lights and mercury thermometers, used cooking oil

Once a week



Thu

Recyclables are also collected on **national holidays**, with the exception of the year-end holiday period from December 31 to January 3.

Day of the week

Plastic Containers and Packaging

Note: Please sort your plastic garbage by type.

Plastic PET bottles



Plastic containers and packaging with



Once a week



Mon

Plastic containers and packaging are also collected on **national holidays**, with the exception of the year-end holiday period from December 31 to January 3.

Day of the week

Used Small Household Appliances

Small household appliances that run on electricity or use batteries and fit in the collection box (the deposit opening measures 30 cm wide × 15 cm high).

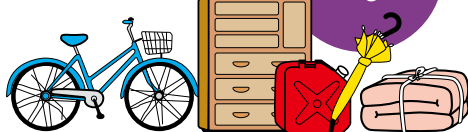
On an ongoing basis



Please place items in the yellow collection box located in public facilities and shops in the city. (See page 9 for the location.)

Large-size Garbage

A fee is charged



Individual collection

To apply: Tel: 042-774-9933

After you make a pickup reservation, the item will be picked up at your home.

Bringing in items directly

You can also bring items directly to the facility.

Recycling Household Appliances

Air conditioners, TVs, refrigerators/freezers, washing machines and clothes dryers

Recycled by manufacturers



When buying a replacement

Pay the fees (recycling fee + collection/transportation fee) to the retail outlet where you are buying the replacement, and ask them to dispose of your used appliance.

When simply disposing of your used appliance

Pay the fees (recycling fee + collection/transportation fee) to the store of original purchase, and ask them to dispose of your used appliance.

If you are not able to get the store you originally purchased your used appliance from to dispose of it, please see page 12.

Inquiries



Information Line Sagamihara

8 a.m. to 9 p.m. (year-round)

Tel: 042-770-7777

Note: Please dial carefully to avoid calling the wrong number.



Sagamihara City garbage sorting app
for smartphones

Shigenjar Search

© Sagamihara City



For iPhones



For Android



Mascot Lemon-chan
© Sagamihara City